

# Microsoft Windows® Patching doesn't get any easier!

Patch  
Management  
Software

Are your PCs getting all the updates they need?  
Install Microsoft Windows® security patches across your network the easy and failsafe way.

## Introducing **Patch I.T.™**

Left to chance your network could be violated and exposed to numerous security threats as more and more loopholes are found in Windows operating systems and applications.

If these loopholes are not closed by installing the appropriate patches then your entire network could be compromised by the introduction of worms, viruses and other malware.

The effect of this could be anything from compromising your confidentiality with passwords, private data or software licence keys being stolen, right up to having your PCs remotely controllable, even using the PCs on your network for malicious purposes such as sending spam or launching Denial Of Service attacks.

This has consequences of a financial and embarrassing nature and can cause harm ranging from at the very least, severe downtime and loss of reputation.

The only way to stay secure is to stay up to date as leaving just one network PC un-patched is like leaving a door open to your network.



**VERSION 3 OUT NOW!**

**Patch I.T.™**  
PATCH MANAGEMENT SOFTWARE

Member of  
**FAST**  
Promoting the legal  
use of software



**Visionsoft.com**

Helping You Manage your IT Assets

# It Couldn't Be *Simpler*.

## How does it work?

After a quick installation of the **Patch I.T.™** console on one PC you can search for your entire network of PCs by IP address range, Active directory or Network Neighbourhood.

At the same time **Patch I.T.™** will have already downloaded one copy of Microsoft .cab (the file containing the full patch requirements) and deployed it to your PCs so that they can be instantly checked for required updates.

Within seconds you can view the patch position of your entire network with just a couple of mouse clicks.




Simple indicators, green for fully patched, or yellow for requires patches, give you an instant overview of your patch position.

You can manually update your PCs by selecting a range to update or automate the process from any given interval, even deploying patches overnight utilising **Patch I.T.s™** Wake-on-LAN facility. It really doesn't get any simpler!

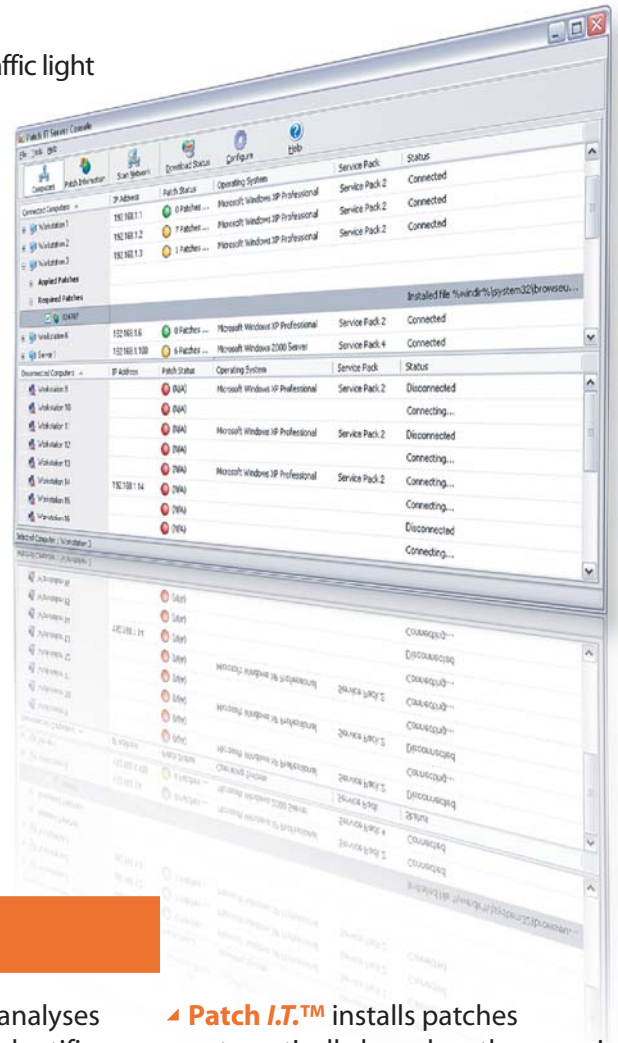
**Patch I.T.™** requires just one connection to the Internet downloading required patches once, absolutely minimising bandwidth.

**Patch I.T.™** deploys patches for all major Microsoft Windows operating systems and applications such as Microsoft Office, Exchange and SQL Server.

**Patch I.T.™** uses a simple traffic light system to identify PC status.

-  PC fully updated
-  PC requires updates
-  PC not connected

*All licence options come with one year's support and FREE version updates.*



## Main Features

- ▶ **Patch I.T.™** automatically analyses MSSecure and WUA, then identifies, downloads and installs the required patches on your client PCs. MSSecure allows patching of older versions of Windows.
- ▶ **Patch I.T.™** also allows you to schedule the application of patches for a specific time of day.
- ▶ **Patch I.T.™** can be installed on any workstation or server.
- ▶ **Patch I.T.™** installs patches automatically based on the scanning schedule you set, or manual updates can be performed from the Patch I.T. main console.
- ▶ **Patch I.T.™** can automatically detect all the Windows PCs on your network however you choose;
  - Active Directory (AD)
  - TCP/IP range
  - Network Neighbourhood.

## System Requirements

Microsoft Windows NT4, 2000, XP, Server 2003. An Internet connection.

*Minimum system requirements for the networked client PCs:*

Microsoft Windows 95, 98, ME, NT, 2000, XP, Server 2003. Internet Explorer 4 or above. Winsock 2. 2Mb of available memory (on top of operating system requirements). A small amount of free disk space (for temporary files).

Call Sales On **01274 610503**